



This Week at Christchurch.

Further details available from the Church Office and on the website at: www.christchurchilkley.org.uk



Monday 20th June	10:00	Toddlers
	19:45	Housegroup 2
	20:00	Kings Club Planning
Tuesday 21st June	09:25	Music Movers 1
	10:00	Music Movers 2
	10:30	Meditation
	14:00	Listening Ear
	19:45	Housegroup 5
Wednesday 22nd June	08:30	Wednesday Wizards
	14:30	Christchurch Guild
	19:30	Ilkley Circuit Meeting
Thursday 23rd June	09:30	Prayer Fellowship
	10:00	Listening Ear
	10:00	A Way Forward for Mission Prayers
	14:00	Listening Ear
	19:45	Housegroup 10
Friday 24th June	10:30	Shoppers Service
Saturday 25th June	Lighthouse Group Training Day	
	10:00	CTI Prayers
Sunday 26th June	18:30	Circuit Celebration Worship
	19:30	Scope



Garden Party

to be held at Glen Rosa and Kitwood House
24 Grove Road Ilkley
on Saturday, 9 July 2011
2.00 – 4.00 pm
Strawberry Teas

Variety of Stalls: Cakes, Books, Bric-a-brac, plants, etc.

Entertainment by Moorland Music Wind Quintet

Christchurch Noticeboard

 www.christchurchilkley.org.uk



All-age contemporary interactive worship at 9:00am every week

This Week: Genesis 1.1-2.4a – Sustaining Community
Next Week: Matthew 10: 40-42 – Welcoming Community

10:30am – Morning Worship

This Week: Trinity Sunday
Led by: Jeannie Buckroyd & Chris Eagle
Next Week: *Led by: Rev Rob Hilton*

6:30pm – Evening Worship

This Week: 3rd Sunday at All Saints Church
Next Week: *Led by: Rev Rob Hilton – Healing Service*

10:30am – Friday Shopper's Service

24th June *Led by: Rev Rob Hilton*

Circuit Celebration Service

The evening service at 6.30pm on the 26th June will be a **CIRCUIT SERVICE** of celebration to mark the end of the **ILKLEY CIRCUIT**. Guest preacher is Rev Rex Owen.

All Welcome



Christchurch is fitted with an induction loop system. Hearing aids should be set to "Telephone". You may need to adjust the volume.

Braille hymn books, large print hymn books and large print word sheets of the hymns and songs at our morning services

CHRISTCHURCH PRAYER CALENDAR

Great and gracious God, whose love has been made real in Jesus Christ, inspire my prayers by the power of your Spirit. May your love flow into the world and the people and situations for which we pray, through our thoughts, words and actions. In the name of Jesus. Amen.

You are invited to include the following suggestions of local and broader concern in your private prayer during the year.

19th Trinity Sunday (20 – 26 Refugee Week)

✦ For a greater experience of Father, Son and Holy Spirit.

✦ BEACON, a project we are currently supporting – the Bradford project working with refugees and asylum seekers.

Further Prayer Opportunities

Every Thursday morning: 9:30am - 10:00am in the Fellowship Room, *a time of shared prayer open to all.*

Our **Prayer Table** at the entrance to the Sanctuary offers helpful leaflets for private prayer.

The **Red Book** in the foyer is always available for written prayer requests. Please contact the **Prayer Chain** for urgent or special prayer needs:
Ann Taylor (01943 600904) or Pauline Mudge (01943 816376)

Dates For Your Diary

Circuit Celebration Service - 26 June at Christchurch,

Inaugural Service for the New Circuit - 6 September at Otley, 7.30pm

Inaugural Circuit Meeting of the Wharfedale and Aireborough Circuit

- 20 September at Christchurch, 7.30pm

Workshop & Open Day followed by Circuit Social Event at Beamsley

- 24 September

Harvest Festival at Beamsley - 25 September at 2.30pm

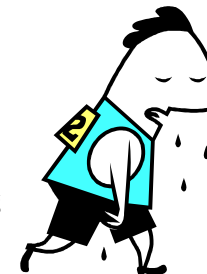
Office Closed Monday 19th June

Our administrator has asked to take yet another day off work. Apparently his wife has a day off on Monday and is demanding (with thinly veiled menaces) that they spend "quality time" together. Mike has already booked their usual table at KFC and has put a bottle of bubbly (Dandelion & Burdock) on ice.

Calling All Runners

17th July is the Church Picnic at the top of Beamsley Beacon and we're encouraged to get to the top in different ways - I intend to run up there from the end of the 2nd morning service just after 11.30am. Anyone want to join me and maybe plan a route, give me a call 607870 or Rob@kiddles.org

Happy Creative travelling and thanks to those who'll carry the picnics for us!



Christian Aid Week

The total raised is £1,281.14. Many thanks to all those who collected or contributed.

Ruth Batterley.

Harvest Celebration Party—Saturday 17th September

Would you like to celebrate harvest with a family party?

Would you consider putting together a team of people to organise it?

If you feel inspired to get involved please ring Rob (607870) or Margo (608479) Now! Time is getting short!



Brian and Rita Armitage
invite you to join them

at:
RAINBOWS END
3 Undercliffe Rise, Ben Rhydding, Ilkley

On **SATURDAY 2nd JULY 2011**
10.00a.m. to 12noon – 2.00p.m. to
4.00p.m.

Bring and buy... Cake... books etc.

*AT HOME
AND IN THE
GARDEN*

*Donations in support
of the work of BEACON
will be appreciated*

