



This Week at Christchurch

Further details available from the Church Office and on the website at: www.christchurchilkley.org.uk

| | | |
|-------------------------|---------------|------------------------------------|
| Monday 16th December | 10:00 | Toddlers Christmas Party |
| | 17:00 | Street Carol Singing |
| | 19:30 | Watercolour Painting |
| | 19:45 | Housegroup 1 at the Lamperts' |
| | 19:45 | Housegroup 2 at Ruth Hilton's |
| Tuesday 17th December | 10:30 | Meditation Group |
| | 14:00 | Listening Ear |
| | 14:30 | Housegroup 3 at Mary Bell's |
| | 17:00 | Street Carol Singing |
| | 19:45 | Housegroup 4 at the Mannalls' |
| | 19:45 | Housegroup 5 at the Wollins' |
| | 19:45 | Housegroup 6 at the Feathers' |
| Wednesday 18th December | 08:30 | Wednesday Wizards |
| | 15:15 | Santa's Grotto |
| | 17:00 | Street Carol Singing |
| | 19:30 | Housegroup 7 at the Evans' |
| | 19:45 | Housegroup 8 at the Shirley Ward's |
| | 19:45 | Housegroup 9 at the Stanley's |
| Thursday 19th December | 09:30 | Prayer Fellowship |
| | 10:00 & 14:00 | Listening Ear |
| | 15:15 | Santa's Grotto |
| | 19:30 | Christchurch Singers |
| | 19:45 | Housegroup 10 at the Henneys' |
| | 19:45 | Housegroup 9 at the Cades' |
| Friday 20th December | 10:30 | Shopper's Service |
| | 15:15 | Santa's Grotto |
| | 18:00 | Jigsaw Fellowship |
| Saturday 21st December | 10:00 | CTI Prayer Group |
| | 15:15 | Santa's Grotto |



CHRISTCHURCH NOTICEBOARD

Morning Worship—

9:00am —  **ON+LINE@9**

This Week- Luke 1:39-55 — Turning the world upside down

Next Week- Contemporary Carol Service:
Luke 1: 57-80 — Exciting news!

10:30am —

This Week- Led by: Deacon Liz Day

Next Week- Led by: Rev Rob Hilton

6:30pm Evening Worship

This Week: 3rd Sunday at All Saints'

Next Week: Carol Service

**Friday
Shopper's
Service**
A twenty minute
time of reflection
10:30am

December 20th

Led by:

**Rev Rob
Hilton**

Christchurch is fitted with an induction loop system. Hearing aids should be set to "Telephone". You may need to adjust the volume.

Large print word sheets of the hymns and songs at our morning services are available. Please ask a Steward.

Are you following the Christmas story explored through the words of Luke's Gospel? Pick up a green leaflet today to follow story told through our Christmas trees and appreciate the imaginative interpretation of those well known verses. The green leaflet also lists our activities through Advent and Christmas. Don't miss out!



Christchurch, The Grove, Ilkley
www.christchurchilkley.org.uk

**December
15th**



PRAYER
CALENDAR

Great and gracious God, whose love has been made real in Jesus Christ, inspire my prayers by the power of your Spirit. May your love flow into the world and the people and situations for which we pray, through our thoughts, words and actions. In the name of Jesus. Amen.

December 15th

You are invited to include the following suggestions of local and broader concern in your private prayer during the year.

- ✠ The work of the Bible Society and those who provide Bible reading notes for daily use.
- ✠ The staff of local shops and services.

Further Prayer Opportunities

Every Thursday morning:
9:30am - 10:00am in the Fellowship Room, a time of shared prayer open to all.

Our Prayer Table at the entrance to the Sanctuary offers helpful leaflets for private prayer.

The Red Book in the foyer is always available for written prayer requests.

Please contact the Prayer Chain for urgent or special prayer needs: Val Worrall (01943 601945) or Val Appleton (01943 430553)

Jigsaw Fellowship – Join us in the Coffee Centre on Friday evenings, from 6pm to 8.30, to make up jigsaws for the Festival planned for next October. Brian Scott, Pam Harris, John Sayers, Lynnda and Phillip Smith

Circuit Service Yeadon 8/12/13

The offering for the work of St Georges Crypt raised £90. Thank you for your generous contributions.

Fiona Spandler.

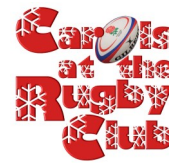
Retirement

Rev. Bill Frame, our former minister, retired from Ministry last Sunday, 8th December, his 65th Birthday. Bill and Jane-Ann left us ten years ago to move to St. Columba U.R.C. in Headingley.

Unfortunately Bill has been very unwell over the last 6 months needing two heart operations - so retirement will initially involve a period of rest and continuing recovery.

They plan to retire to Pickering in January. Our best wishes have been sent to them at this special time.

Churches Together in Ilkley Christmas cards (detailing Christmas services) - please take a bundle and deliver as soon as possible. Thank you.



A reminder to all that Carols at the Rugby Club will be today! Please be there for

12:00noon ready to sing!!

Christingle, 4:00pm 24th December

Please donate mince pies for giving away after the Christingle service along with Val's delicious mulled punch.

Clearly mark them **Christingle** and leave in Christchurch café.

If you would like to help make Christingles, we start at 10:00am in the Lower Hall on Tues 24th December.

Thank you, Ruth Jones



The Name Game Quiz

Those who enjoyed the challenge of 'The Food of Love' quiz last year, I have the new one! 'The Name Game', £1 per copy. Please ask me for a one. If you haven't tried one of these annual brain-teasers before, why not have a go?

You have until April to complete it. Proceeds go to Open Arms Malawi, a charity which houses children who are orphaned, often because of AIDS.



Juliet Amos

Tape Ministry for the 22nd and 29th will be suspended due to the church building being closed over the Christmas and New Year break. Taping will recommence Sunday 5th January.

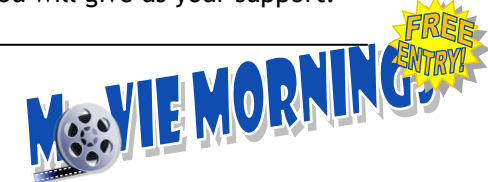
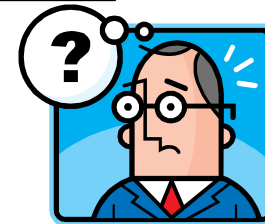
Knock, Knock!
'Knock, knock.'
'Who's there?' 'Isabel'
'Isabel who?' 'Is a bell necessary on a bicycle'.



A quiz based around knock knock joke names are available to buy from the office or Margaret Whitton.

Quiz sheets are £1 (or more) each in aid of Dan's Den. A (small!) prize will be given for the first correct solution on 13th January.

A new Christchurch guild quiz is now available from Joan Loach priced £1 in aid of this year's guild charity, "Embrace the Middle East" We hope you will give us your support.



Miracle on 34th Street

Monday 23rd December
10:00am to 12:00noon in the Lower Hall.

Any age child welcome, but must be accompanied by an adult.

Afterwards, why not enjoy lunch in our Café?

