



This Week at Christchurch

Further details available from the Church Office and on the website at: www.christchurchilkeley.org.uk

Monday 14th September	09:45	Toddlers
Tuesday 15th September	09:25/10:10	Music Movers
	10:00	Weekday Welcomers
	10:30	Meditation Group
Wednesday 16th September	08:30	Wednesday Wizards
	10:00	Weekday Welcomers
Thursday 17th September	09:30	Prayer Fellowship
	10:00	Weekday Welcomers
Friday 18th September	10:30	Pause For Thought Service
	18:00	Jigsaw Fellowship

Second Annual Jigsaw Festival 29th - 31st October

Opening times will be:

10:00am to 4:00pm on Thursday 29th and Saturday 31st; and
11:00am to 4:00pm and 6:00pm to 8:00pm on Friday 30th.

You can help us by:

- ✚ Making up a jigsaw at home (we can deliver and collect it)
- ✚ Join our weekly Friday Jigsaw Fellowship anytime between 18.00 and 20.00
- ✚ Place a piece (or two!) of the jigsaws in the foyer
- ✚ Donate any jigsaws you no longer want (We have around 500 completed jigsaws to display and sell, but we would like more!!)

As usual, we need a number of volunteers 'on the day' to help the event run smoothly - stewards, packers, cash desk, catering etc. If you can help in any way, if only for an hour or so on any day, please have a word with Pam Harris, Brian Scott, John Sayers, Lynnda or Philip Smith. Alternatively, leave a message at the church office and we will get in touch with you.

Proceeds from this event will go to church funds and the Alzheimer's Society.



In aid of

Alzheimer's Society

Leading the fight against dementia



CHRISTCHURCH NOTICEBOARD

This Week

9:00am — 
Acts 2: 1-13
"Listen"

10:30am — Led by: Rev Dr Barbara Glasson

Next Week

9:00am — 
Mark 9: 30-37
Who is wise?

10:30am — Led by: Rev Rob Hilton

Rev Barbara Glasson will do a workshop - with Ruth Hilton- on Wednesday September 16th at 7:00-9:00pm. It will take place in the Yurt and the vicinity. It will be a 'Listening' workshop and very much an introduction to our 'Year of Listening'.

10:30am Friday Pause For Thought — A twenty minute time of reflection

Christchurch, The Grove, Ilkley - www.christchurchilkeley.org.uk

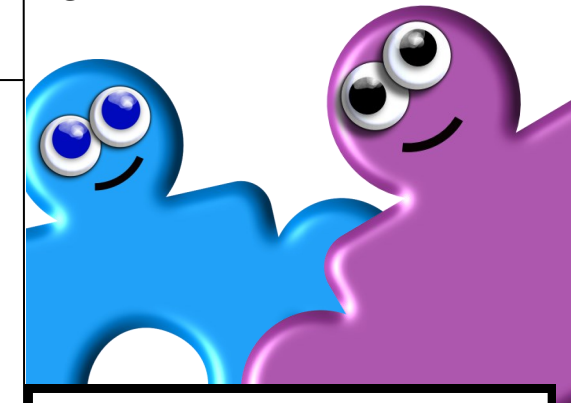


Christchurch is fitted with an induction loop system. Hearing aids should be set to "Telephone". You may need to adjust the volume.



Large print hymn books or word sheets of the hymns and songs are available at our morning services. Please ask a Steward.

Second Annual Jigsaw Festival 29th - 31st October



13th September



Deadline for items for the Sunday notice sheet is no later than the previous Wednesday morning. Items can be dropped in to the office, or preferably sent via email to office@christchurchilkeley.org.uk



Prayer Opportunities at Christchurch

Our Prayer Table at the entrance to the Sanctuary offers helpful leaflets for private prayer .

The Red Book in the foyer is always available for written prayer requests.

Informal Prayer Meeting—Thursday Mornings 9:30am to 10:00am
Join us, you will be very welcome!

Please contact the **Prayer Chain** for urgent or special prayer needs:
Val Worrall (01943 601945) or Val Appleton (01943 430553)

Riddings Ramblers

We will be meeting in the Foyer at 9:30am on Thursday 17th September for a seven mile walk.

Please bring a picnic lunch.

All are welcome – for more information contact Elisabeth Halsall

Tel: 01943 608652



Musical Volunteers Wanted

Music Movers is a weekly singing, shaking, and dancing outreach to under 3s and their parents/carers at Christchurch. We have a small rota of volunteers and would really like to grow the team.

If you're interested in joining our team at least once a month, have a chat with Noah on 07726 286420 or email noah@christchurchilkley.org.uk



Melting Pot

At our last meeting Robin Hamon gave us fresh insights about what the Bible says about our relationship to and our place in the environment.

Our first session at 8:00pm in the Café will be a follow-up, facing up to our responsibilities and personal life-style choices - a sort of Green Spot Max!

All welcome.

Christian Aid Cafe at Christchurch on Saturday 3rd October 12-4pm. Please come along and have lunch, a cream tea or two, cake or just a humble cup of tea to support the work of Christian Aid.

If anyone has books or cakes they would like to donate for the stalls, I would be only too happy to collect.



Ruth Hilton

Matugga and Ilkley Churches, 'its all changing'

A couple of months ago Phil and Libby Chappell stood down from their day to day involvement with the 'Give a Child a Hope' charity after 10 years in post. This has left a sizeable gap and the trustees are looking for more people to be involved in order to support the staff and children in Matugga and to lighten the load for everybody volunteering. They have employed Nikki Barber as the charity's administrator and Martin Smith is helping them to introduce some structural changes to do with how the charity will operate in the future.

If you feel that you have some skills to share and a heart to help the charity and the children at the Revival Centre Orphanage in Matugga in anyway at all, from trusteeship to medical skills to fund raising to making up Gift cards at Christmas, do please contact Nikki or Martin.

Contact details:

Email Nikki Barber giveachildahope@gmail.com 07519 845899 and Martin Smith smithbenhydd@gmail.com 01943608854

A group of Ilkley residents (under the name Ilkley - Caring for Calais) are organising a collection of items for the residents of the Calais 'Jungle'. The collection point will be in the entrance to the Lower Hall until Sept 20th.

Please donate any of the following:

- Mens' clothing (clean), specifically -
- Jackets (small and medium only)
- Tracksuit trousers
- Jeans
- Belts
- Socks
- Pants
- Woolly hats
- Mens' shoes (trainers and hiking shoes only)
- Tents (fully functioning)
- Blankets
- Sleeping bags
- Roll mats
- Tarpaulins
- Torches (with batteries)

Thank you



HOUSEGROUPS

Housegroups start again in the week beginning 20th September.

Ephesians will form the basis of our discussions on how to live a Christ-inspired life in today's world.

If you are thinking of joining a group, please contact Juliet Amos for details. It is always good to add new members.

Tel: 01943 600111

email: juliet.j.amos@gmail.com or leave a message in the church pigeon holes.



ILKLEY
caring for
Calais

