

WORSHIP AT CHRISTCHURCH
December

Sunday	3rd	10th	17th	24th	31st
9:00am	Worship Team	Worship Team	Worship Team	Worship Team	Worship Team
10:45am	Rev Roberta Topham Inc. Holy Communion	Rev Roberta Topham	Rev Tim Perkins	Rev Roberta Topham	At Ben Rhydding
	-	Circuit Service at Bramhope	6:00pm Carols	4:00pm Christingle	-

Friday's Pause For Thought - a 20 minute time of reflection

1st — Rev Peter Willox / 8th Rev Roberta Topham*

15th — Rev Dick Watson / 22nd — Mgr Kieran Heskin / 29th — No Service

*Communion available after the service

Wednesday Fellowship

Meeting most Wednesdays at 2:00pm

8th December

Photocopying

An honesty box has been placed near the office photocopier

2p per black and white copy, 10p per colour

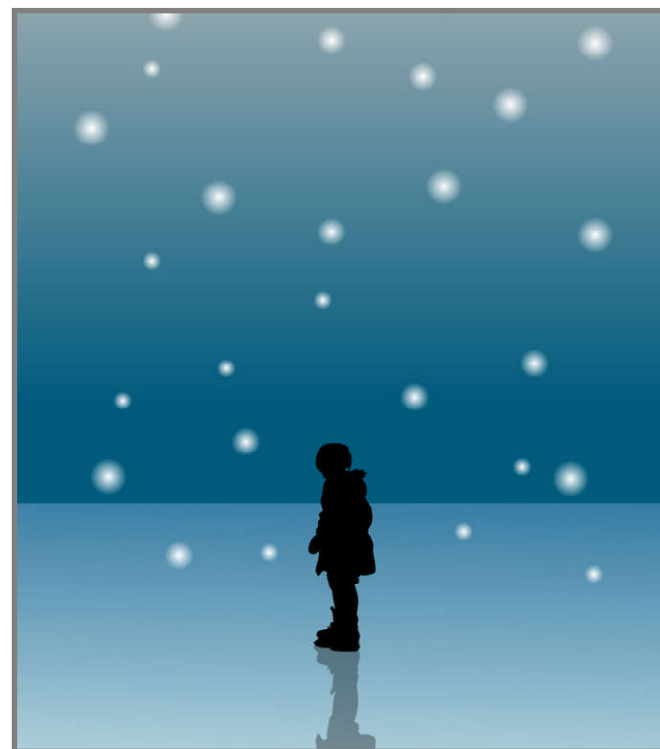
Please account for 'trial and error'. Thanks.

Registered Charity Number: 1148214

Our copy paper is from



WIDER HORIZONS



In This Issue

Roberta's Writings
Blue Christmas

Sunday Worship
New Starts

News from the URC
Yorkshire Synod
the launch of 'Walking the Way'

Congregational Meeting Report
What's going on?

Café Update
Check out our Specials Board



CHRISTCHURCH
December
2017

✉ office@christchurchilkley.org.uk

🏠 www.christchurchilkley.org.uk

📞 01943 603209

The Methodist Church / The United Reformed Church



ROBERTA'S
WRITINGS

Dear friends,

I guess that most of us are starting to prepare for Christmas in one way or another. I have come across a new kind of Christmas service. In America and in a few churches in Britain something called a "Blue Christmas" service is being held. These services often take place on the longest day of the year – December 21st – and are particularly helpful to anyone finding the Christmas season lonely or a little sad.

Indeed, there are many reasons why someone might be especially sad at this time of year. There are those who are grieving over the death of a family member or friends and the loss becomes particularly acute when the loved-one is missed at Christmas. Then there are those who are separated from family by distance or divorce or misunderstanding. People who are suffering often don't want to be a burden to those who are experiencing the joy of the season, so they isolate themselves instead of reaching out to others.

The Blue Christmas Service is meant to offer those of us who are suffering a place to acknowledge pain and grief – either in total silence or by participating in a short service of candles, Scripture reading and song – a place to find hope.

We aren't planning such a service at Christchurch this year but I thought just writing about it is a way to acknowledge that anyone who is finding this season difficult is not alone. There are thousands of people who experience the heightened emotions of this time in a mixed way and it is good to know that as Christians we can bring our feelings into worship – no matter what they are. At Christchurch, through Dan's Den, we are beginning a baby-loss group called "Stars" which will start this December and aims to carry on for as long as it is needed through the coming months. Please do remember this initiative in your prayers.

At this or any time of the year ministers, preachers at church and the pastoral team are always willing to listen. Please do come and talk if you find this season particularly challenging in any way.

For Mary and Joseph way back 2,000 years ago even the coming of Jesus was not without its challenges. There was shock and anxiety at points for them too. Yet, through it all, they managed to glimpse something of the glory of God.

I hope and pray that a vision of God coming close will be very real for us all at this holy time.
Wishing you peace and joy - *Roberta*



Please pray:

- ✚ for the housebound or those in residential care homes
- ✚ for those we may have forgotten, who quietly keep going, seeking no extra attention
- ✚ for the Pastoral Team and all involved in pastoral care at Christchurch
- ✚ for those who provide the flowers in church and displays throughout the year
- ✚ for the Fairtrade stall, and those who run it
- ✚ for us to shop wisely as individuals, being aware of the impact our choices have on society and the world at large
- ✚ for the countries of Africa

Give thanks for the past year. Take time to reflect on what has happened, to see where God has been working in your life and how his Holy Spirit has guided you and Christchurch through all you've encountered.



PRAYER
CALENDAR

Text your prayer concerns to the Christchurch Prayer Team on:

07562 343622

Please contact the **Prayer Chain** for urgent or special prayer needs:



Need a Room?

If you would like to book one of our rooms please contact Val Worrall, our booking secretary. Val is in the Office on Monday, Tuesday and Thursday mornings (01943 831779) or contactable via email on office@christchurchilkley.org.uk

The deadline for the January 2017 edition of Wider Horizons is the first Sunday in December.

Items (please try to keep to about 350 words which is one page) preferably by email, please, as a Word attachment to **both**

Mike Fawcett - office@christchurchilkley.org.uk

Steve Amos -

Café Update

It's been another busy few weeks since our last update.

We continue to add new things to the Specials Board including:-

- Sausage & bacon baps,
- Three cheese ploughman's
- Three different types of paté
- Homemade fresh cream trifle
- Homemade meringues with cream & strawberries
- Blackberry & apple crumble and custard
- Parkin pigs
- Fresh Pomegranate



Keep looking at the specials board over the next few weeks for more delicious new homemade goodies!

We have also been busy "out of hours" staying open until 8.30pm one evening to serve people going to an Ilkley literature event. On another occasion we started work at 7.30 am to make extra scones for a group of thirty five walkers who wanted refreshments prior to The Café being open. We also started work early to prepare extra bacon for the Jigsaw Festival.

All these types of extra curricular events are great for providing extra income and raising awareness of the Café in the community. However they do take extra organisation and commitment from staff & volunteers. We are more than happy to provide this additional service. We would ask that if you are organising an event in church that could impact on The Café (or that you think The Café should be involved in) please speak to Kathryn or myself so we can all work together to make the event work for all.

This year The Café has decided to enter Ilkley Business Awards. We are entering three categories:

- Food & Drink Business of the Year
- Small Business of the Year
- The "Peoples Award"

The Peoples Award category is one that the general public are being asked to nominate a business whom they feel has offered them great service. If you would like to nominate The Café (or Dan's Den) please call into The Café and ask for a form.

Thank you to you all for your support and encouragement this year. On behalf of Kathryn myself and all the staff we would like to wish you a Merry Christmas and a Happy New Year and look forward to seeing you in the New Year in our newly refurbished Café.

Liz Frankland

Comings and Goings

We are sad to announce the deaths of Jean Clark, Betty Crossley and Alan Lowe. Our love and prayers go to their families at this time of giving thanks and remembering.

Ann Holdsworth has moved to 1, Chantry Court, Chantry Drive, Ilkley LS29 9HU. We wish her much happiness as she settles into her new home.

We welcome Madeline Allington who has come to live at Abbeyfield Court and Eve Cooper who has come to Listers Court. Please make them welcome as they worship with us and join our church family.

Please continue to pray for people in special circumstances and let the Pastoral Team know of any new concerns. Please keep your directory up to date by noting down the comings and goings.

Pat and I would like to thank you for your many cards, prayers and concerns over the recent sad loss of my Dad. It is a great comfort to know that love is shared in this way.

Brian Scott

May I thank you, on behalf of my family and myself for all your messages of sympathy, cards and flowers at this time of Alan's illness and death. I myself, have been given physical help on many occasions and much care. Thank you.

Joyce Lowe



A reflective, informal and supportive time for anyone affected by the loss of a baby at any stage of pregnancy, or in infancy. a time of remembering, sharing and giving thanks

7:30PM TO 9:30PM, 5TH DECEMBER IN THE

CHRISTCHURCH CAFÉ

FOR A CHAT ABOUT STARS, CALL LAUREN ON 07891 85081 OR EMAIL LAURENMCDONNELL4@GMAIL.COM



COMINGS & GOINGS

Pattern of Sunday Worship

Many will already know the Trustees decided that, as from Sunday 19th November, there will again be two services on Sunday mornings, with different styles of worship.

Discussion at the Congregational Meeting in October, together with many other comments received, showed that 'Together at Ten' had not been as successful as had been hoped. We were seeing a significant drop in regular attendance, and several people had felt they could no longer attend; some had already decided to go elsewhere.

The Leadership Team met on 24th October to consider how the church should move forward; a range of options was considered. Subsequently, the Trustees agreed with the Leadership Team that the spectrum of preferred worship styles at Christchurch is too wide for there to be just one service on a Sunday which could hope to enable everyone to worship satisfactorily.

Of the two Sunday services, one is focussed on all-age, all-stage, interactive and participatory worship, with a more contemporary feel (including music). The other is focussed on preacher-led worship with calm reflection and a more time-honoured feel (including music).

The new pattern of Sunday worship is that the more contemporary service starts at 0900, while the more time-honoured starts at 1045.

Responding to recent comments, refreshments are again being provided in the Café after both services. This does duplicate the number of people needed to provide refreshments, however, so hopefully there will be sufficient volunteers for this to continue.

This is not purely a return to what went before 'Together at Ten' was created, as there were issues with both previous services which needed to be addressed. Both services are therefore 'new starts', albeit with elements of what has gone before.

The new pattern will become fully established in the New Year. There will be the opportunity on **Sunday 7th January**, during worship, to contribute thoughts on the development of these new services. Meanwhile, interim arrangements are in place for the remainder of 2017.

Michael Noble—Chair of Trustees / Rev Roberta Topham—Minister



WORSHIP



Dan's Den Update

Where to start? We'll start with the new. The Dan's Den team has evolved, Sarah and Michelle have moved on to bigger and brighter things. Although we do keep pulling Michelle back! This has made way for Martha to progress to paid kitchen supervisor and created openings allowing us to welcome Jo and Kate.



DAN'S DEN

We've been operating a new book keeping system this year allowing greater visibility of "where we're at" so 2016/17 accounts have been finalised and this year (2017/18) we are showing sales increases, over last year of 3%. Admissions are up by nearly 5%. All positive news for, to coin a phrase, the Golden Quarter.

Outreach, led by Christine, is developing and growing in many different directions. Christine has recently undertaken a Mental Health First Aid course which would be good to roll out across the team. We are also running Fresh Faces to welcome and integrate new families to the community. Touchpoint is designed to offer companionship and support to single parent and carer families. Lauren is currently looking into training for Infant Loss support, for which we hope to run support sessions for again to provide support and fellowship.

We love Christmas!!!! We'll be celebrating at every opportunity but focused sessions will be held at Happy Hands everything Thursday through Advent. We will be adding Sparkle on Saturday 16th December with our wrapping service and Thursday 21st will see various Mums having their nails painted whilst the children play. You know how us ladies like to multi task! Our Finale will be Breakfast with Santa supported mainly by Philip Smith, but don't tell the littlies.

All of this wouldn't be possible without our awesome volunteers' time, effort and inspiration. I want to name them all. However they know who they are!!!!

Caroline Kelly



Three Of Four Quiz

Each of the following clues consists of four words or phrases. Three have a common theme. Which is the odd one out?

There is no charge and solutions may be handed in to Christchurch. or to me Michael Sharman at 19 Wharfedale Drive.

If you wish, donations may be made to the Church or Michael Sharman (say £1 or more per person). Do not be afraid to submit an incomplete answer

01. Martha, Anne, Emily, Charlotte
02. sapphire, club, duck, mix
03. Reuben, Dan, Zebulun, Ephraim
04. great, blue, marsh, pied

05. mittens, waterfalls, whiskers, doorbells
06. Ruby, Ranter, Ribbon, Ringwood
07. Samuel, David, Barnaby, Oliver
08. fibula, spatula, patella, tibula

09. Erie, Ontario, Huron, Toronto
10. Simon, Sharon, Anthony Nicole
11. Florence, Brian, Dougal, Ellen
12. Lucy, Edward, Susan, Peter

13. Hastings, Dalglish, Bunter, Watson
14. Hastings, York, Jersey, Mexico
15. neon, helium, antimony, argon
16. Lorna, Wendy, Melanie, Pamela

17. Oxford, Cambridge, Piccadilly, Berkeley
18. Neil Robertson, Judd Trump, Marco Fu, Mark Williams
19. Cox, Comice, Worcester, Blenheim

20. window, auction, uncle, courage
21. hockey, croquet, golf, snooker
22. Antonio, Miranda, Jessica, Shylock
23. march, may, july, august

24. lion, monkey, pig, dog
25. Brimstone, Camberwell Beauty, Peacock, Cinnabar
26. Capri, Golf, Galaxy, Fiesta
27. Alpha, Romeo, Juliet, Gamma

28. Mercury, Saturn, Neptune, Jupiter
29. Brighton, Huddersfield, Hull, Newcastle
30. Webster, Sugden, Pollard, Dingle

Michael Sharman

News from the Wharfedale & Aireborough Circuit: October 2017

Bev Downes and Carol Tooke have joined the Circuit Leadership Team as Property and Finance Officer and Finance Advisor respectively, with Richard Lowe as Trustee for Finance. The Circuit is looking for more volunteers to join the team of Circuit Stewards so the tasks can be spread more widely. Churches are asked to consider whether there are suitable people who could be relieved of other church duties in order to take on this much needed work.

New ministerial staff from September in addition to Rev Roberta Topham are: Rev Roger Smith and Deacon Jenny Parnell (who will be concentrating on work in the 'Eastern' Partnership), and Rev Leonora Wassell who will lead a 'Smaller Churches' project. Rev Helen Lambert was recently appointed as Baptist Minister of Trinity Rawdon LEP. Rev Cayte Norman continues as Associate Presbyterian within the Circuit.

Rev Tim Perkins' request for an invitation to be stationed in the Circuit for a further four years from September 2018 has been confirmed by the Circuit Meeting.

Resulting from the staff moves, there has been an exceptional programme of updating the décor and facilities at manses during recent months especially at Yeadon, Guiseley and Ilkley. The Bramhope Manse is to be prepared for letting as it is not currently needed for ministerial staff.

The Norwood Management Team had spent a very large amount of time investigating various options for the future of the Retreat Centre and Sunday worship, including interviewing prospective wardens, but came reluctantly to the conclusion that none of the local options were viable and recommended closure. However, the Circuit Meeting decided there should be a further investigation into the viability of the Retreat Centre as a resource within the new Yorkshire West Methodist District. An immediate programme of essential maintenance is needed to ensure the premises are protected over the coming months while this investigation proceeds, and there is an appeal for money and volunteers for this. Offers of help should be directed to either Rev Lesley Taylor. The Team will report on their findings to the Circuit Meeting in Spring 2018.

The Calendar of Safeguarding training events for the year is now out via Viewpoint; Merle Collins will be involving those concerned. Mike Fawcett will be compiling a database for the Circuit of attendance at training sessions to prepare for Connexional auditing.

The Leadership Team is compiling new 'Policies and Procedures' relating to the ways of working in the Circuit and to give guidance on areas of finance, property, personnel etc to ensure a consistent approach to decision making. These will be brought to the Circuit Meeting for approval in due course.

Ian Williams, on behalf of the Circuit Stewards

News from Congregational Meeting

Christchurch Café - The new structure has settled in very well indeed. Takings are well up on the same time last year and the staff have settled in and working well together. Refurbishment of the Café is about to happen, funded by money already set aside for this: new chairs have been ordered and a new carpet and re-decoration will be in place shortly. Everyone should be encouraged use of the Café. Thanks were expressed to the volunteers and the staff who have coped so admirably with the change. There is still a need for volunteers and people to offer Listening Ears.

Children, Young People and Families Lay Employee - The vacancy was advertised in July and August. Two candidates were interviewed but neither completely met the requirements of the role so a decision was taken not to appoint but rather to re-advertise the post and to continue the search. It was hoped to interview again in November.

Accounts 2016-2017 - A balanced budget was set for 2016/17 but after 6 months it was anticipated that unless a significant improvement was achieved a further £12k deficit would arise. Since then, steps have been taken in a number of areas: the need to increase giving as people are able has been highlighted, additional fundraising events arranged, room hire income increased, cost savings put in hand by reducing energy bills and copying costs. The review was undertaken to seek to optimise the performance of the Café. The overall performance for the year, (net of accounting adjustments and ignoring net Café costs), was a £2.5k surplus. Giving by members accounts for 55% of income and Room hire 15%. Contributions to our parent denominations for ministry accounts for 38% of expenditure while we spend a further 30% on salaries and 8% on utilities. Thanks were expressed to all who have given and helped to realise savings. However, two thirds of our income is from giving and, due to rising inflation, we need to ensure this keeps pace and that expenditure is controlled.

Financial Update for 2017/18 - The budget required a 5% increase in giving to meet budget and that has been achieved in the first quarter. The Café has shown a surplus with increased takings and reduced costs (while the maintaining the warm feeling felt by those using the Café). Fund raising may fall short of budget. Overall, a £4k surplus has been achieved in the first quarter of the financial year. This is encouraging but we shouldn't be complacent. Some substantial legacies have been received which provide a great opportunity. We should plan how to invest the legacies to grow the church and to fulfil our long-term goals.

Carbon Off-setting Scheme - The lights in the Lower Hall have been changed to LED to save energy. A carbon offsetting scheme has been developed such that every additional £10 given will be used to install additional LED lighting and would offset 10,000 miles of driving (in a small car) and will, over the lifetime of the lighting, save Christchurch five times as much again. Further information to be made available and donations will still

Christchurch Café were also extremely busy and had considerably higher than usual revenue as well.

We had many new customers to the event and several said they would donate the jigsaws back when done and would return for next year's Festival. Others expressed an interest in the Friday night Jigsaw Fellowship or becoming part of our home jigsaw making group. New members always welcome.

The money raised will be shared between Christchurch, Yorkshire Air Ambulance, and Cancer Research UK.

However this year the festival was merely the "hors d'oeuvre" Between now and Easter we hope to raise a lot more money with the 48,000 piece jigsaw including a "marathon event" and attracting corporate sponsorship. We will also have a sponsorship scheme from as little as a £1 so mere mortals such as ourselves can take part. This will begin shortly.

The Jigsaw group would like to thank all of you who helped with this year's Festival and throughout the year. We will shortly hold a review meeting. Meanwhile the jigsawing goes on.

Our Charitable giving at Christchurch

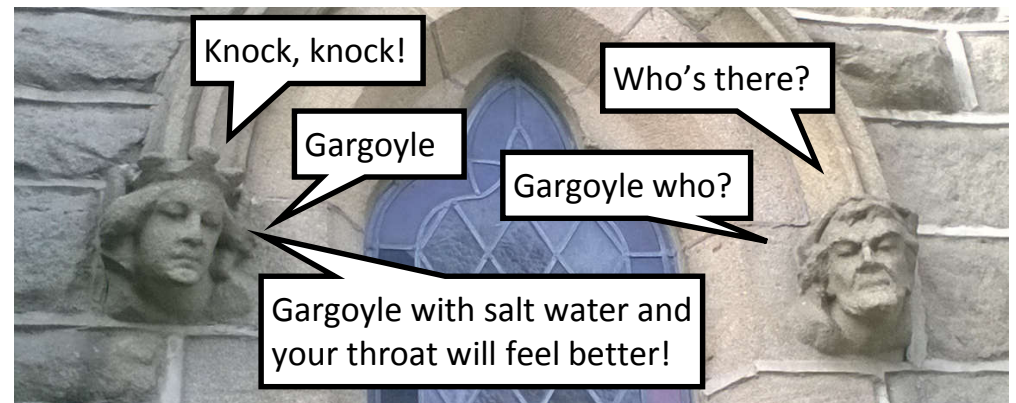
As we outlined in a previous article we are going to focus on one charity at a time so we can raise awareness, pray and fundraise.

Our first charity is Action for Children so over the next few months watch out for ways to learn more and contribute. Geoff Halsall will be giving us more information.

If you have any fundraising ideas please let us or Geoff know.

Christine Henney and Merle Collins

THE TALKING HEADS OF CHRISTCHURCH



Jigsaw Festival 2017

Our fourth annual Jigsaw Festival took place on Saturday 28th, Monday 30th and Tuesday 31st of October. The Festival drew our largest crowds yet for all three days.

This year we concentrated solely on jigsaws and did not have any other stalls nor refreshments. We also reviewed our pricing structure to be comparable with the charity shops.

Saturday was manic for most of the time.

The Festival was "officially" opened by Professor Mike Dixon who welcomed people to the event and introduced our 48,000 piece jigsaw entitled "Travel Around the World". Present at the event were representatives from Ilkley Travel agencies and The Yorkshire Air Ambulance.

The British jigsaw manufacturer JUMBO sponsored our festival, helping with publicity (we had a great article from them in the Ilkley Gazette) and by sending us a huge (jumbo size!!!!) box of jigsaws and related items. Included were three special puzzles to use as prizes. Many thanks to them.

We held a "Guess the number of pieces in a glass jar" which was won by Mrs Marrion Harvey".

A Yorkshire Quiz was also held which was won by David Feather

The third prize will be used at a future event.

This year due to our publicity and pricing structure we sold the most jigsaws ever. One customer bought more than twenty jigsaws! We took in excess of £1800 and the



Pictured on the opening day are representatives of the Yorkshire Air Ambulance, Thomas Cook and Travelwise with Prof Dr Mike Dixon who officially opened the proceedings on behalf of Christchurch.

be open to Gift Aid.

Review of Sunday Worship – The main item of business was a discussion about our new Sunday service – 'Together@10' after 4 months of running. The meeting heard what people felt were going well and what concerns there were.

It was noted the change is only recent and the model needs to be developed, coping with change is challenging for everyone.

Some expressed the view the new service is too much like Online@9 while others felt it was too much like the 10:30am format.

One of the marks of a church is unity and diversity. Different perspectives should be embraced but we share a common faith in Christ and this presents an opportunity to model Christian behaviour.

We need to compromise and accept that we can't always get what we want – instead, we should think about how we can advocate the opposite view.

Roberta suggested we need to retain focus on the fantastic church we have at Christchurch which continues to be pioneering in the breadth of ministry, mission and worship.

Our Circuit Steward suggested that we need to consider what the service needs to be for those who are not yet members here and how it can be relevant, meaningful and welcoming to that group.

In summary, there was a spectrum of views with people at each end of the spectrum and a group in the middle who could see good parts of both styles of worship. We value diversity but that doesn't necessarily mean embracing that diversity through a single act of worship on a Sunday morning.

We already have services on other days and at other times and must consider how we can enable everyone to worship in a way with which they can engage.

We need to continue to pray for the new service and to come in expectation that we will meet Jesus during worship and be open to what we hear.

Circuit News –The Circuit has welcomed new staff - Roberta, Rev Roger Smith in Guiseley, Yeadon and Bramhope working along with Deacon Jenny Parnell. New Lay Employees – Bev Downes (Property & Finance), Carol Tuck (Finance), Richard Lowe agreed to serve as Trustee for Finance. The Manses have required significant work to update them over the summer and thanks were expressed to all who have been involved.

Norwood Retreat Centre was to be retained and a refreshed vision created regarding the Centre as a place that could be used for time away. Rev Leonora Wassell has been appointed as a Supernumerary Minister for a small churches project.

Chris Mannall

News from the Autumn United Reformed Church Yorkshire Synod

Opening Worship - Synod met at Christ Church with Trinity, South Ella, Humberstone on Saturday 14 October. Opening worship led by Dr Chris Dowd, Minister of that church, focussed on the Parable of the Sower from Matthew 13.

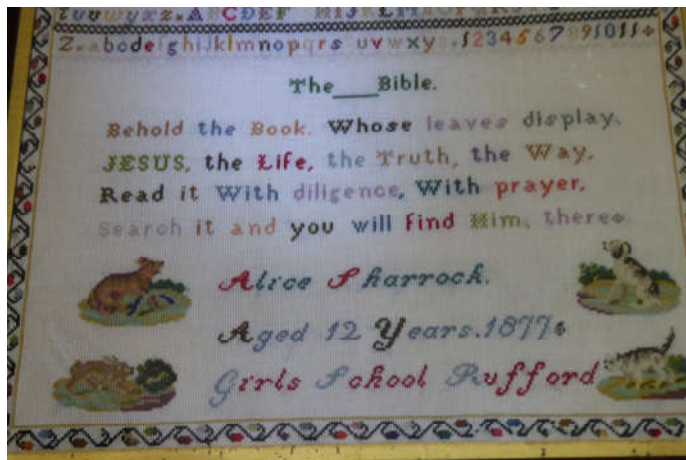
Rather than thinking of ourselves as the seed planted in rich soil and flourished, we were encouraged to think of ourselves as sometimes being the seeds that land on the pathway, on rocky ground or else those that fell among thorns. What are the times when we hear the words of the kingdom but misunderstand ('it wasn't invented here!'), or do not root ourselves in the joy that we have experienced and fall away ('the stuff of life gets in the way!') or we hear the word but something in our lives pulls us away from following it? Rather if we are sown in good soil we should bear fruit which Jesus promised will multiply.

The Reformation 500 Years On - We learnt from the Professor Clyde Binfield some more about the life and legacy of Luther.

We have heard much about this on Sundays at Christchurch in October but Clyde quoted Roy Hattersley who spoke about the Reformation being a kind of proto-Brexit and Giles Fraser who stressed the need for a unity of diversity in which all denominations thrive and play their part in the Body of Christ.

Walking the Way - We heard about the launch of 'Walking the Way' where we are encouraged to walk a journey of discipleship offering our daily lives as Christians. We will hear more of this in due course.

Chris Mannall



I spotted this child's sampler dated 1847 at Rufford Old Hall. I quoted it recently when I led the devotions at the Wednesday Fellowship.

Margo Atkinson

Stamp and Postcard appeal

Please remember to put your postage stamps and postcards (used/unused British and Foreign) in the box beside the pigeonholes in the foyer.

Do leave a good margin of paper around each stamp. Your contributions, however few, will be most welcome.

Unwanted stamp, or postcard albums are very acceptable and, when sold or auctioned, support the extensive work of Christian Aid, the Church in Sudan Appeal and Oxfam.

Thank you,



Avril Benson

Christmas Greetings

During Advent there will be a Christmas Tree in the foyer on which you can hang a Christmas card as a greeting to your friends at Christchurch.

It is suggested you make an appropriate donation to a charity of your choosing.

Margo Atkinson

